

VISTA2000 Knowledge Server Workshop Racial Ethnic Ministry Exercise

This Racial Ethnic Ministry Workshop will help to identify those areas in your region that have the highest percentage of non-Anglo population and then identify the most prominent non-Anglo group within that population for the purpose of focusing ministries.



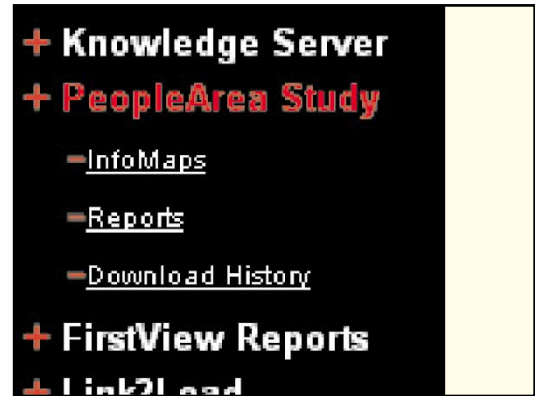
29889 Santa Margarita Pkwy
Rancho Santa Margarita
California 92688-3609
949.635.1282 (Ph)
949.635.1283 (Fax)
800.442.6277 (Toll Free)
www.Percept.info

Online Preparation for Workshop

Before beginning the workshop with your Planning Team, you will need to gather some information for the team to study. First, identify a few areas in your Regional Body where you have a high non-Anglo population. Follow the steps below to locate a few areas for the Team to study further.

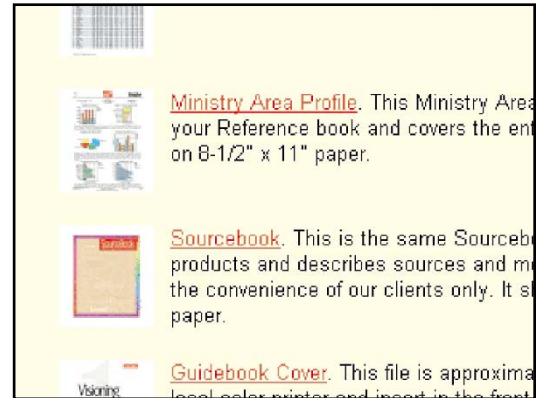
STEP 1

Log in to VISTA2000. Select PeopleArea Study from the list of options on the left menu of the VISTA2000 Front Page. Choose the Reports option on the submenu.



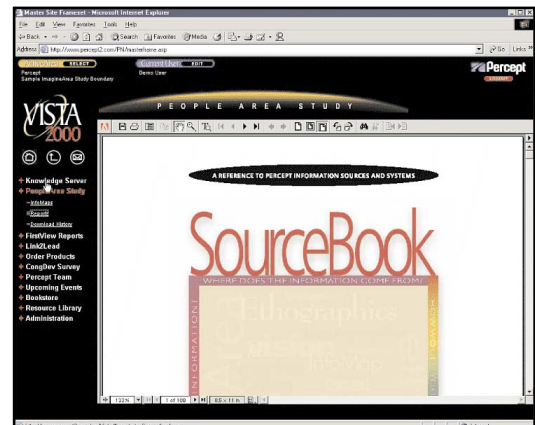
STEP 2

Inside the Reports page you will find a link to your Study Guide, regional Ministry Area Profile and Sourcebook. Download and print one copy of each document.



STEP 3

After you have finished printing, select Knowledge Server from the list of options on the left menu.



STEP 4

Click the “down” arrow under the variable labeled “Non-Anglo Percent.” This will rank all of your PeopleAreas highest to lowest based upon this one variable.

Pop Growth	Non-Anglo Percent	Avg Household Income	Average Age	Education Level (0Low, 10High)
↑	↓	↓	↓	↓
3.8%	37.5%	\$58,866	35.6	9
7.7%	26.5%	\$49,041	35.7	3
7.7%	25.7%	\$78,013	35.4	8

When considering the subject of racial/ethnic specific ministry, there are two dominant ways to approach the subject. The first is to start by trying to identify the non-Anglo population as a whole and then determining the racial-ethnic make-up of that population. The second is to begin with the goal of forming ministries for a specific non-Anglo segment of the population, and then working to locate where that segment is most highly concentrated in the region.

This Race/Ethnicity workshop focuses on the former. It is designed to identify those areas in your region that have the highest percentage of non-Anglo population and then identify the most prominent non-Anglo group within that population for the purpose of focusing ministries.

Look at the projected population counts for these PeopleAreas listed in the “Projected 5yr Pop” column. Use the projected population figure and the Non-Anglo percentage to identify PeopleAreas that you would like to study further. Once you have identified a few areas you will need to print the FirstView report for each area. You can print the FirstView report for each area by selecting the button (blue button with plus sign) to the far left of each row. This will bring a menu of options, the first option is FirstView report.

Click icon for more info	I.D. No.	Nearby Place
+	18	NE Lawrence (8 mi.)
+	22	Bright
+	25	SW Anderson (7 mi.)
+	32	N Noblesville (7 mi.)



Once you have printed the FirstView reports for the PeopleAreas that you wish to study, you will need to prepare materials for the Team members to use in the Team Process. Divide your team by the number of PeopleAreas you are researching (may be as little as one person per PeopleArea).

Items Needed for Workshop with Planning Team:

1. Whiteboard/Chalkboard/Newsprint and marker/chalk
2. FirstView Reports (one per small group member)
3. Ministry Area Profile for the Regional Boundary (one per small group)
4. Percept Sourcebook (one per small group)
5. List of churches by ImagineArea (one per small group). This can be found in the Mission Opportunities section of the Study Guide.

The Workshop

Team Process Approximately 1 Hour

Step 1 Identify the purpose for the meeting

It is always a good idea to begin a process such as this by ensuring that everyone knows the intended outcome of the meeting. The purpose should be “to identify potential areas in the Region to focus ministry toward the non-Anglo population.”

Step 2 Explain your research

Let the group know how you determined the areas they will be studying. Explain that you utilized KnowledgeServer to identify a few areas around the Region that had a high non-Anglo population.

Step 3 Break into small groups

Break the team into smaller groups. Each small group should be given a FirstView report, a copy of the Regional Ministry Area Profile, and a SourceBook. Every group should study a different FirstView report.

Step 4 Study the area

Write the following questions out for everyone to see.

1. What is the expected rate of population growth/decline in this PeopleArea?
2. What is the current racial/ethnic distribution in the PeopleArea?
3. What sort of racial/ethnic growth is expected in the PeopleArea over the next 5 years?
4. Are there any existing churches of our denomination in the area?
If so, which ones?
5. Include any other questions or variables (up to 6 more) that you would like the groups to consider. I.e. area income level, generations, lifestyle, etc.

Have each group list the answers to these questions for the area that they are studying for everyone to see. They may need to use the SourceBook as a reference guide to ensure that they fully understand the definitions of each variable.

Step 5 Summarize the data and make a case

Once each small group has gathered the facts about the PeopleArea that they are studying, ask each group to talk about the area that they have studied. They should state whether or not they believe this area might be a good area to focus racial-ethnic specific ministries. Encourage the groups to provide support for their decision by comparing the PeopleArea contained in the FirstView report, to the Region as a whole. The Regional Ministry Area Profile will provide the information to be used for comparison.

Example:

“We believe that this area may be a good location for Hispanic/Latino ministries because Hispanic/Latinos make up 44% of the population. Additionally, the Hispanic/Latino population is projected to increase by 30% over the next 5 years.”

After each group has presented their findings, encourage the rest of the team to ask questions about the PeopleArea being presented, e.g., Is the overall population projected to grow? If so, by how much? What are the concerns for the people in this area? What is the income level? What is the family structure? Etc.

Step 6 Conclusion and Plan of Action

Once the Team members have discussed each area, ask the group to choose the top two or three areas where they feel they should focus their attention in further study. Then, present following questions to the Team and open the floor for discussion.

1. What are the next steps we need to take to minister to the population that we have identified in each area? List them. Will these steps direct us toward action?
2. How can we assist and equip the churches in these areas to focus their ministries? If there are no churches in the area how can we minister to the community?
3. What are some barriers that we might encounter as we move ahead with the next steps that we have just identified? How can we address these barriers?
4. What possibilities or opportunities do we see for the future? How can we be sure to take hold of the opportunities as they present themselves?