

VISTA2000 Knowledge Server Workshop New Church Development Exercise

This New Church Development Workshop will help to identify those highly populated areas that have an under-representation of your particular denomination



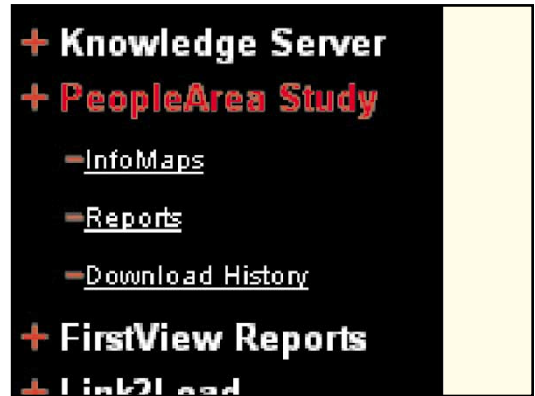
29889 Santa Margarita Pkwy
Rancho Santa Margarita
California 92688-3609
949.635.1282 (Ph)
949.635.1283 (Fax)
800.442.6277 (Toll Free)
www.Percept.info

Online Preparation for Workshop

Before beginning the workshop with your Planning Team, you will need to gather some information for the team to study. First, identify a few areas in your Regional Body where you have a high population without any churches. Follow the steps below to locate a few areas for the Team to study further.

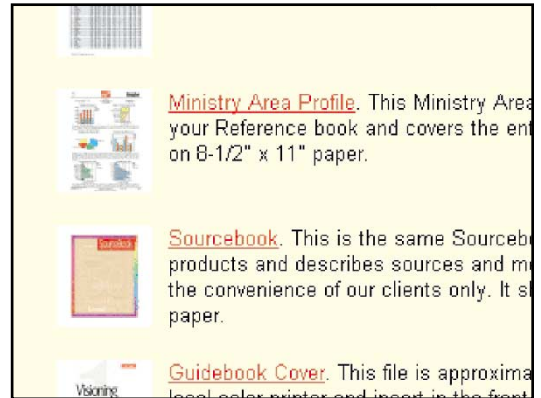
STEP 1

Log in to VISTA2000. Select PeopleArea Study from the list of options on the left menu of the VISTA2000 Front Page. Choose the Reports option on the submenu.



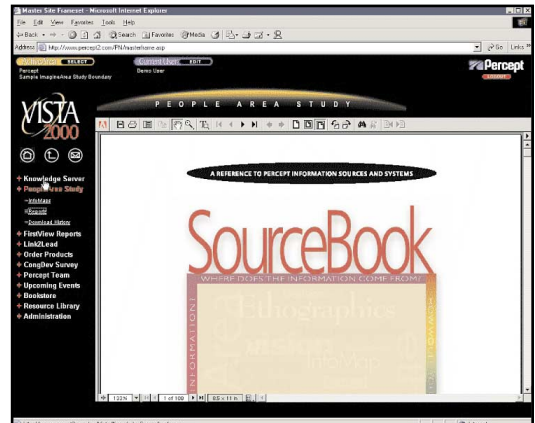
STEP 2

Inside the Reports page you will find the Ministry Area Profile and Sourcebook. Download and print one copy of each document.



STEP 3

After you print a copy of SourceBook, select Knowledge Server from the list of options on the left menu.

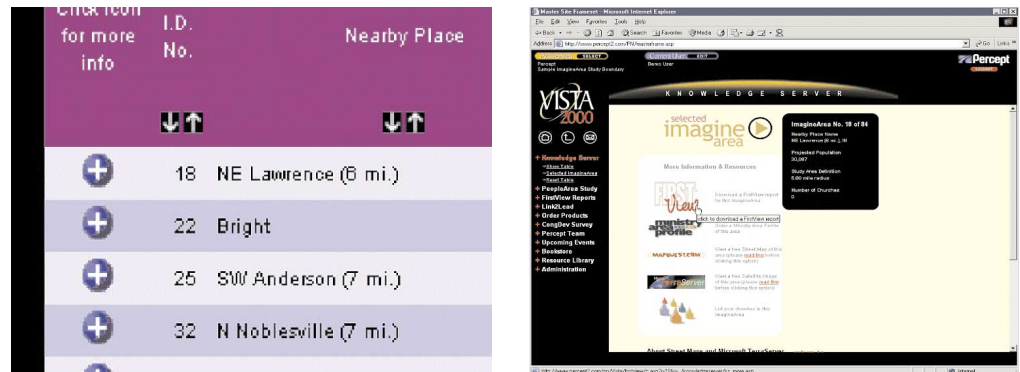


STEP 4

Click the “UP” arrow under the variable labeled “Number of Churches” — this will sort all of your PeopleAreas lowest to highest based upon this one variable.

Projected yr Pop	Number of Client Churches	Projected Pop Growth	Non Angl Perce
30,087	0	17.0%	6.0
24,693	0	8.3%	2.0

Look for the “Projected 5-yr Pop” for each area. Once you have identified a few areas that you believe the team should study you will need to print the FirstView report for each area. You can print the FirstView report for each area by selecting the button (blue button with plus sign) to the far left of each row. This will bring a menu of options, the first option is FirstView report.



Once you have printed the FirstView reports for the PeopleAreas that you wish to study, you will need to prepare materials for the Team members to use in the Team Process. Divide your Team by the number of PeopleAreas you are researching (may be as little as one person per PeopleArea).

Items Needed for Workshop with Planning Team:

1. Whiteboard/Chalkboard/Newsprint and marker/chalk
2. FirstView Reports (one per small group member)
3. Ministry Area Profile for the Regional Boundary (one per small group)
4. Percept Sourcebook (one per small group)

The Workshop

Team Process Approximately 1 Hour

Step 1 Identify the purpose for the meeting

It is always a good idea to begin a process such as this by ensuring that everyone knows the intended outcome of the meeting. The purpose should be “to identify potential areas in the Region to plant new churches.”

Step 2 Explain your research

Let the group know how you determined the areas they will be studying. Explain that you utilized Knowledge Server to identify a few areas around the Region that had a high population but no church from your denomination.

Step 3 Break into small groups

Break the team into smaller groups. Each small group should be given a FirstView report, a copy of the Regional Ministry Area Profile, and a SourceBook. Every group should study a different FirstView report.

Step 4 Study the area

Write the following questions out for everyone to see.

1. What is the expected rate of population growth/decline in this PeopleArea?
2. What is the predominant lifestyle group for the PeopleArea?
3. What is the current racial/ethnic distribution in the PeopleArea?
4. What sort of racial/ethnic growth is expected in the PeopleArea over the next 5 years?
5. What is the generational distribution in the PeopleArea?
6. What does the family structure look like in the PeopleArea?
7. What are the education levels in the PeopleArea?
8. Include any other questions or variables that you would like the groups to consider.

Have each group list the answers to the questions for the areas that they are studying. They may need to use the SourceBook as a reference guide.

Step 5 Summarize the data and make a case

Once each small group has gathered the facts about the PeopleArea that they are studying, ask each group to talk about the area that they have studied. Ask them to state whether or not they believe this area might be a good location for a new church start. Encourage the groups to provide support for their decision by comparing the PeopleArea contained in the FirstView report, to the Region as a whole. The Regional Ministry Area Profile will provide the information to be used for comparison.

Example:

"We believe that this area may be a good location for a new church start because the area is projected to grow by 16% in the next five years, up to 23,624 people. In that same period, the Region as a whole is projected to grow by only 2%. Additionally, the generational breakdown...etc."

After each group has presented their findings, encourage the rest of the team to ask questions about the PeopleArea being presented.

Step 6 Prioritize

Once the discussion winds down, you will need to direct the team toward further action. Ask the team members to rank all of the areas looked at and put them in the order of what areas should be considered first, second, third, etc., for a new church start.

Step 7 Conclusion and Plan of Action

Once the Team members have ranked the PeopleAreas, pose the following questions to the Team and open the floor for discussion.

1. What are the next steps we need to take? List them. Will these steps direct us toward action?
2. What are some barriers that we might encounter as we move ahead with the next steps that we have just identified? How can we address these barriers?
3. What possibilities or opportunities do we see for the future? How can we be sure to take hold of the opportunities as they present themselves?